

# New Women's and Children's Hospital

Brendan Hewitt, New WCH Project Director

Kadaltilla / Adelaide Park Lands Authority Board Meeting  
22 June, 2023

Big plans, better care for the long term.

# Acknowledgement of Country

Ngadlurlu tampinhi, yalarra ngadlu Kurna yartangka inparrinhi. Ngadlurlu parnuku tuwila yartangka tampinhi. Ngadlurlu Kurna Miyurna yaitya yartamathanya Kurna yarta tampinhi. Yalarra parnuku yailtya, parnuku tapa purruna puru purruna.

We would like to Acknowledge that the land we meet on today is the traditional lands for the Kurna people and that we respect their spiritual relationship with their Country. We also acknowledge the Kurna people as the custodians of the greater Adelaide region and that their cultural and heritage beliefs are still as important to the living Kurna people today.



# New WCH Features

- Total Capacity - 414 beds (76 increase), 14 Theatres (9 increase)
- 25% bigger than the current WCH
- Critical care services on one floor
- Dedicated Heliport
- Project budget \$3.2 billion
- Completion 2030- 2031
- Dedicated car park with over 1300 spaces
- New WCH and RAH expansion capacity
- A Hospital in the Park





# New WCH Master Plan

- Based in Kurna Country on the Barracks site
- Released 29 May 2023
- Marks another step to delivering a state-of-the-art facility that will give South Australian families access to the most advanced hospital care, technology and medical research for generations to come
- Key focus on transport, access, path networks and connection to Park Lands



- Document available at [www.newwch.sa.gov.au](http://www.newwch.sa.gov.au)



# A Hospital In The Park



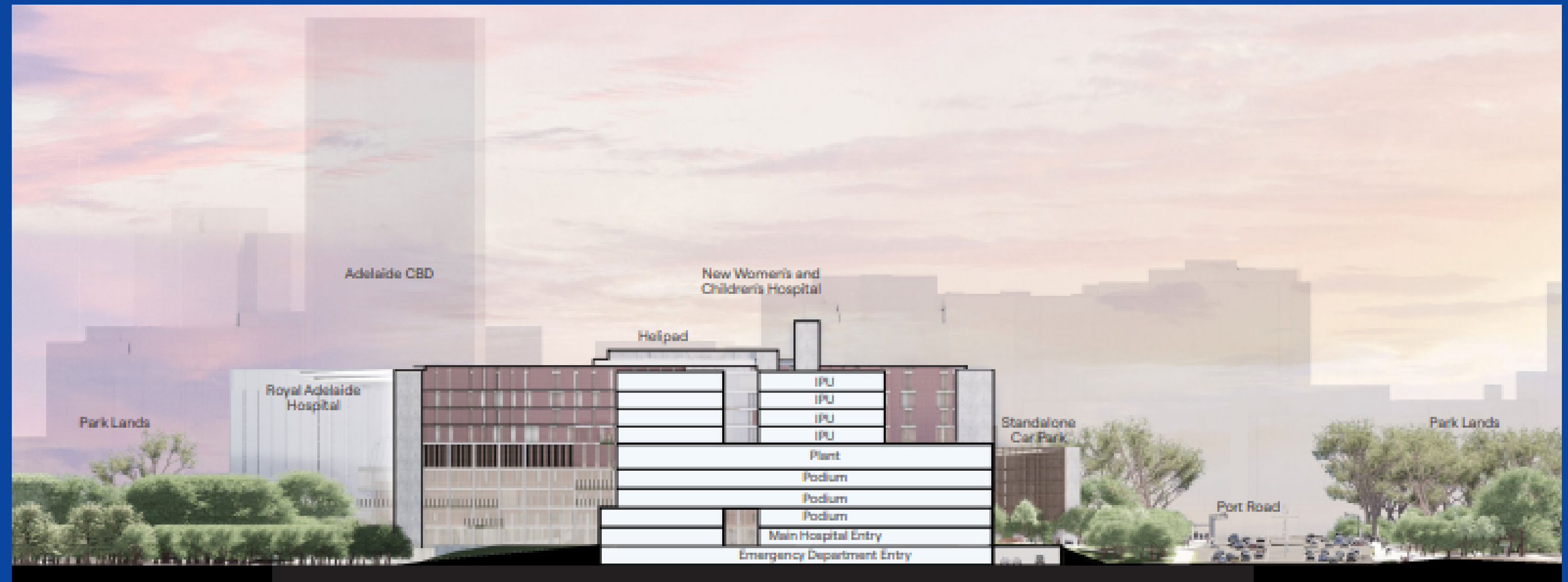


# Design Approach

The New WCH is accommodated over 10 levels (plus plant and Helipad)

There are several benefits to the proposed solution such as:

- Providing a more **efficient design** that supports a healing environment by maximising access to **natural light, views and connection to Park Lands,**
- **Reducing travel distances, providing efficient patient flows** and work processes, reducing waste and providing closer proximity to equipment and services,
- Optimising the building footprint to **minimise the impact on Park Lands**
- Engineering with efficiency in mind.
- Team focus on Environmentally Sustainable Design and Construction.





# Existing Conditions Overlay



Built Form Overlay - Precinct Setting



Built Form Overlay - Project Site



# Planning Considerations - Site Constraints



Rail Track Clearances



Building Level and Height Limits



# Potential Site Connections

# Public Transport Connections



- KEY**
- Entry/Access Point
  - Main Hospital Entry
  - ↔ Existing/Enhanced Pedestrian / Cyclist Connection
  - ↔ Proposed Pedestrian / Cyclist Connection
  - ↔ Possible Future Connection by Others
  - ↔ Vehicle Connection
  - ↔ SUP, linking river bike track to city and RAH
  - - - Boundary

- KEY**
- Bus Stop
  - Tram Stop
  - Future Tram Stop Opportunity
  - Main Hospital Entry
  - ↔ To Metro Train Station
  - - - Boundary

**Public Transport Connections - Bus, Train, Tram**

Public transport links are readily accessible with bus and tram routes along Port Road, and train stations are a short walk or ride to Mile End or along North Terrace to Adelaide Train Station.



# Park Lands Integration - Optimised Public Space Access

- 30,000m<sup>2</sup> additional accessible Park Lands
- Inaccessible areas of the Park Lands will be transformed into open, landscaped areas and will include a 'Nature Play' area and family-friendly spaces
- Direct connection to the Park Lands, enhancing recovery and wellbeing
- Opportunities for connection to nature and the Park Lands





# Hospital in a park - Nature as a partner





# Next Steps

- Concept Design – scheduled for completion September 2023
- Government consideration of Project Concept report and referral to Public Works Committee and State Planning Commission – late 2023
- Schematic Design – scheduled to commence October 2023 for approximately 8 months
- Commencing early works late 2023/early 2024





Enabling Access to  
Kate Cocks Park





**Government  
of South Australia**



**Women's  
& Children's  
Hospital**